



### **Shelter Reservations**

Heritage Trails Park shelter may be reserved for your use. For information and reservations see County website.



# HERITAGE TRAILS COUNTY PARK



### **Information**

For more information on exploring other Washington County Parks, please contact:

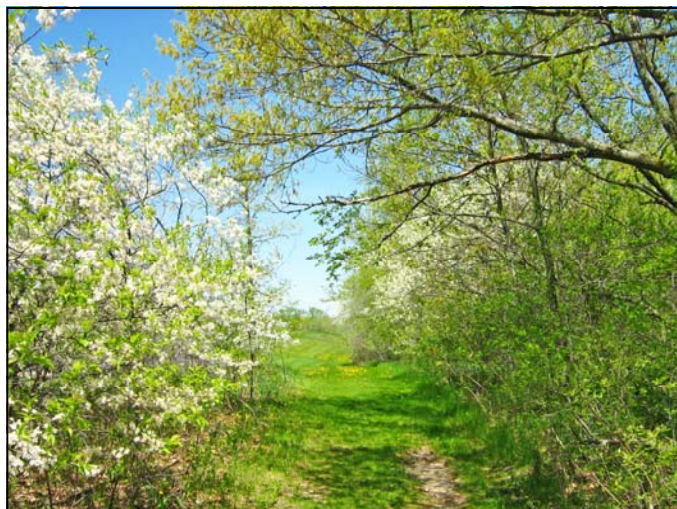
Washington County  
Planning and Parks Department  
333 East Washington St.  
Suite 2300  
West Bend, WI 53095-2003  
262-335-4445



[www.co.washington.wi.us/parks](http://www.co.washington.wi.us/parks)

### **Recreational Facilities**

- Reservable Shelter
- Picnic Area
- Hiking Trails
- Soccer Fields
- Play Equipment
- Water
- Restroom
- Snowmobile Trail
- 18 Hole Disc Golf Course
- 9 Hole Foot Golf Course



Follow us on Facebook & Twitter:

<http://facebook.com/washcoparks>

<http://twitter.com/washcoparks>

## Washington County Park System





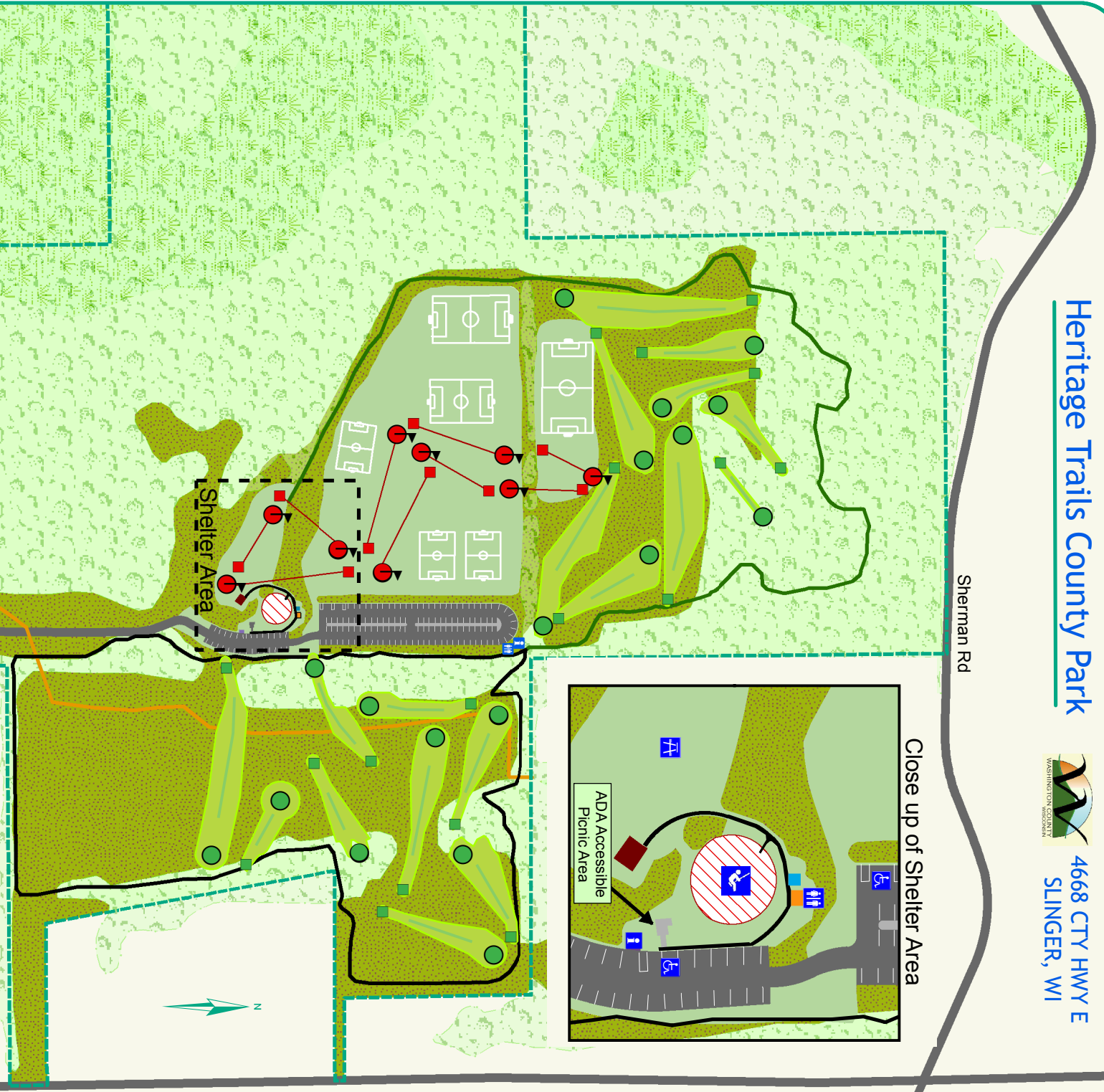
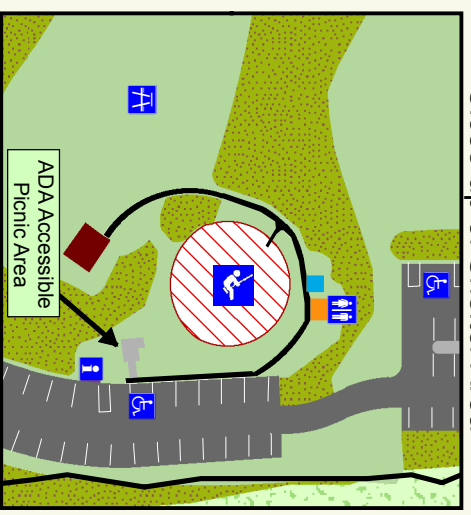
# Heritage Trails County Park



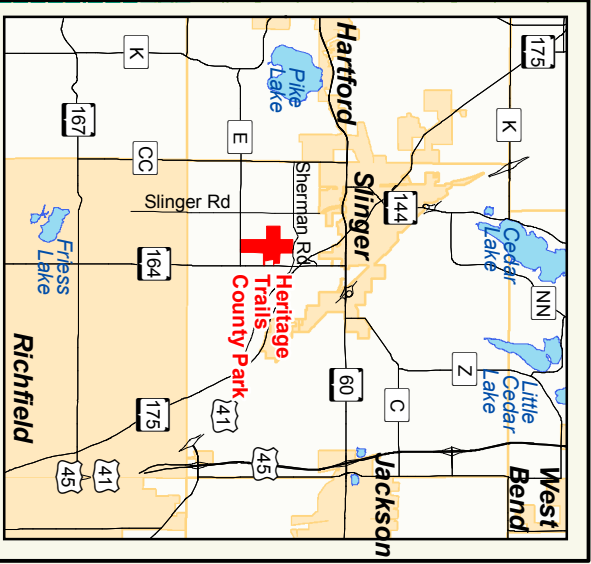
4668 CTY HWY E  
SLINGER, WI

Sherman Rd

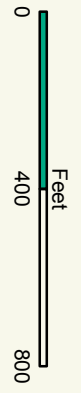
Close up of Shelter Area



- W** Drinking Water
  - G** Large Grill
  - Restroom
  - Shelter
  - Maintenance
  - Playground
  - Disc Golf Tee
  - Disc Golf Basket
  - Foot Golf Tee
  - Foot Golf Cup
  - Soccer Fields
  - Open Grasslands
  - Wetlands
  - Wooded Area
- Trails**
- Black (1.1 Mi)
  - Green (.9 Mi)
  - Snowmobile



**Directions**  
Highway 41, to Hwy 60 west exit,  
west on Hwy 60, south on Hwy 164,  
west on County E to Entrance



Hwy E

Hwy 164